



# GAT MONTHLY MEMBERSHIP PROGRESS REPORT

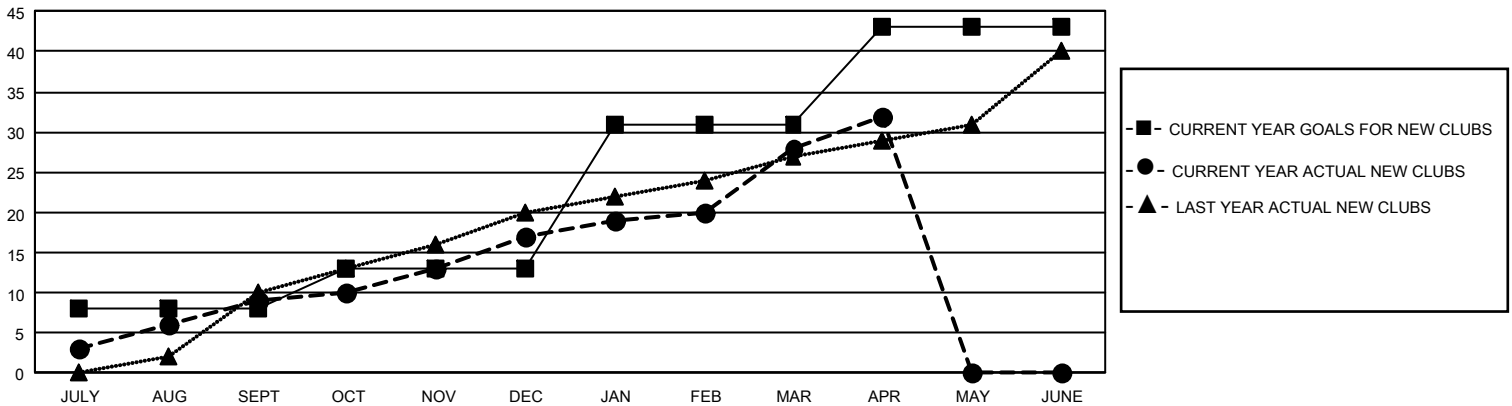
Results as of: 4/30/2025

## GMT Constitutional Area 3, Group B

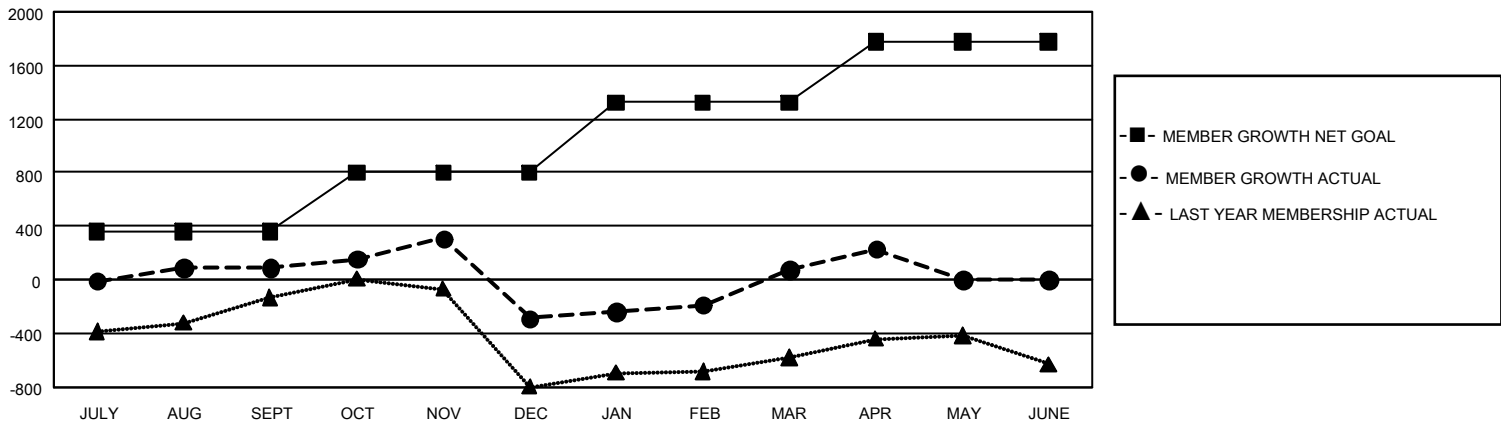
REPORT DOES NOT INCLUDE CLUBS IN UNDISTRICTED AREAS.

Clubs				Members			
RESULTS FOR 2024-2025				RESULTS FOR 2024-2025			
QUARTER	NEW CLUB GOAL	NEW CLUBS	DROPPED CLUBS	QUARTER	MEMBER GROWTH NET GOAL	MEMBER GROWTH ACTUAL	DROPPED MEMBERS ACTUAL (including transfers)
JULY/AUG/SEPT	24	9	7	JULY/AUG/SEPT	360	865	624
OCT/NOV/DEC	15	8	5	OCT/NOV/DEC	441	948	1,171
JAN/FEB/MAR	54	11	3	JAN/FEB/MAR	521	874	441
APR/MAY/JUNE	36	4	0	APR/MAY/JUNE	456	302	128

GOALS AND ACTUAL NEW CLUBS CUMULATIVE



GOALS AND ACTUAL MEMBERS CUMULATIVE



DROPPED CLUBS: 15

451 CLUBS OF 959 ADDED 1 OR MORE NEW MEMBERS

### GENDER DISTRIBUTION

MALE	10,753 (41.21%)
FEMALE	15,338 (58.78%)
NON BINARY	0 (0.00%)
PREFER NOT TO ANSWER	3 (0.01%)

### DROPPED MEMBERS

DECEASED	111
CLUB CANCELLED	263
OTHER	1,978
<b>TOTAL</b>	<b>2,352</b>

[CLICK HERE FOR CUMULATIVE MEMBERSHIP DATA](#)

TOTAL FAMILY UNIT MEMBERS	0
FAMILY MEMBERS PAYING HALF DUES	0